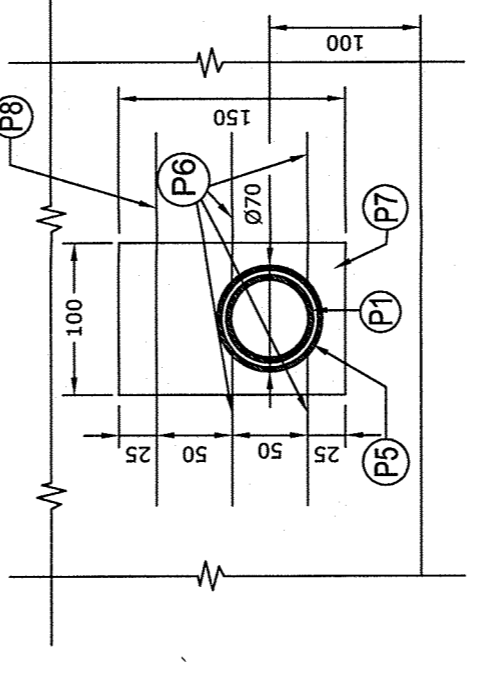
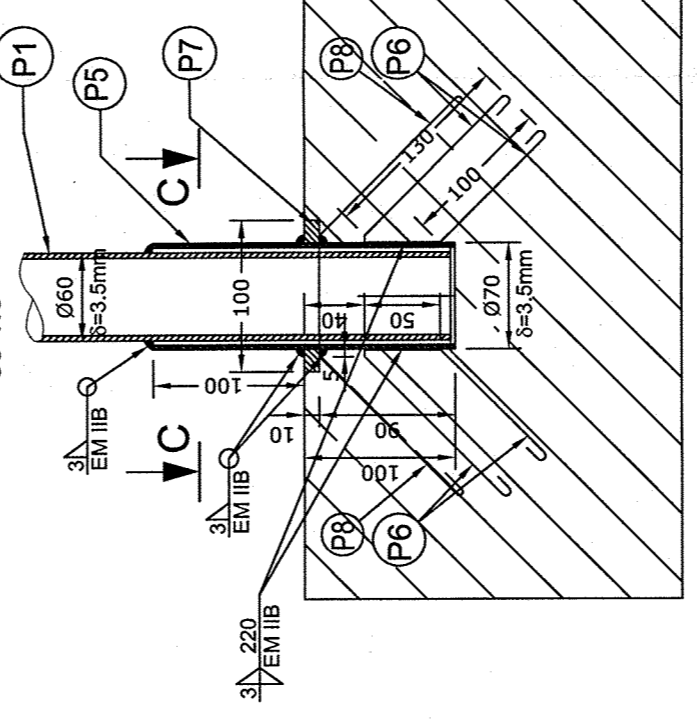


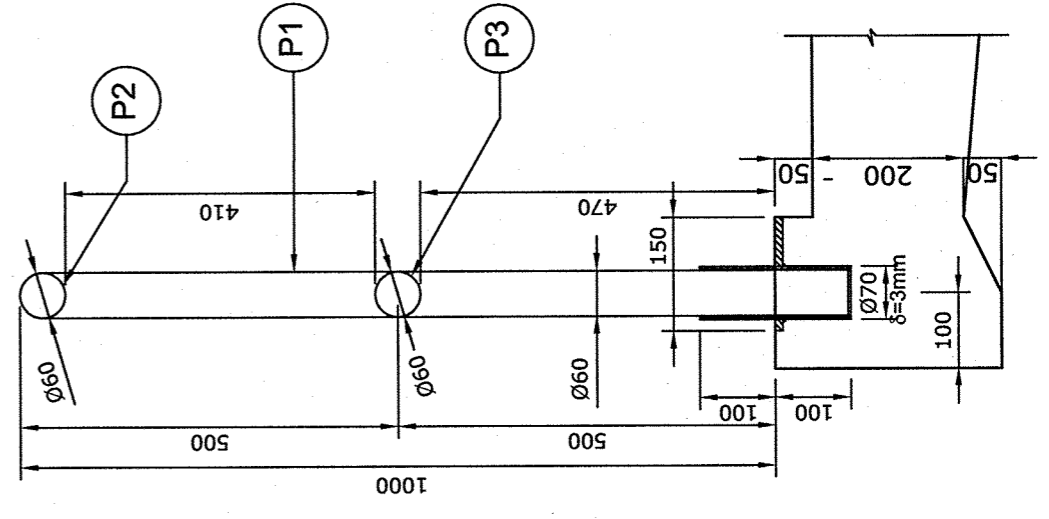
VEDERE C-C / VIEW C-C



DETALIUL B / B DETAIL



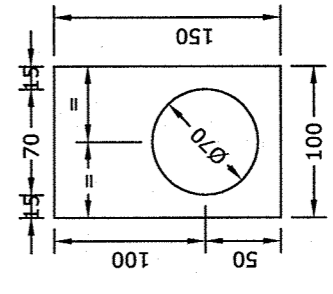
SECTIUNE A-A / SECTION A-A



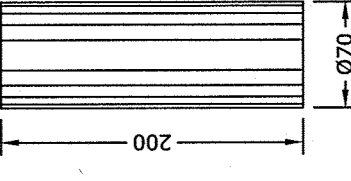
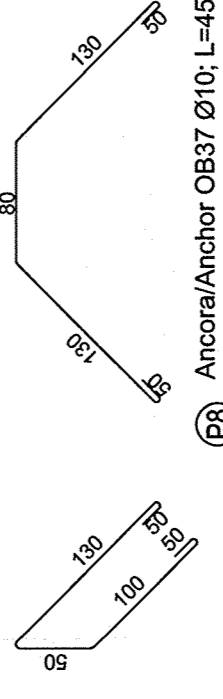
EXTRAS MATERIAL METALIC PENTRU PARAPET (culei)
METALLIC MATERIAL TABLE FOR HANDRAIL (abutments)

Poz.	Denumirea piesei Name of piece	Buc. Pcs.	Dimens. (mmxmm)	Lung. Length (m)	GREUTATIWEIGHT			
					S235 JRH kg/ml	S235 JR kg/ml	S255 kg/ml	
1	Stalp/Pole	8	Ø60x3.5	1.065	4.88	41.55		
2	Mana curenta/Handrail	4	Ø60x3.5	1.80	4.88	35.15		
3	Umpitura orizontala / Horizontal filling	4	Ø60x3.5	1.27	4.88	24.80		
4	Umpitura verticala / Vertical filling	8	Ø60x3.5	0.135	4.88	0.85		
5	Teava palnar / Bow pipe	8	Ø70x3.5	0.20	5.74	9.20		
6	Ancora/Anchor Ø10mm	32	Ø10	0.40			7.90	
7	Placuta metalica/Metallic band	8	100x10	0.15			7.85	
8	Ancora/Anchor Ø10mm	8	Ø10	0.45			9.42	
Greutati pe tipuri de oțel/Weights on steel types (kg)					111.35		9.45	10.12
3% Sudura executata cu electrozi SUPERBAZ (kg)					3.35		0.30	0.31
Greutate totala pe tip de oțel/Total weight on steel type (kg)					114.70		9.75	10.45
Greutate totala / Total weight (kg)							134.90	

P7 Placuta/Band 100x10-150
8 buc./ 8 pcs.



P8 Ancora/Anchor OB37 Ø10
L=400mm 4 buc./stalp
1/4 pcs./pole



P5 Teava palnar pentru
pozarea stlpilor
OLT35 Ø70x3.5mm,
L=200mm
Bow pipe for poles
laying OLT35
Ø70x3.5mm,
L=100mm

OSERVATIE:
-Imbinarea pieselor P1...P7 se
realizeaza printr-o sudura de colt
Δ=3mm, urmata de polizarea
integrala a sudurilor (electrozi
SUPERBAZ).

OBSERVATION:
-Joining pieces P1...P7 is
executed by angle welding
Δ=3mm, then by total
polishing of welding
(electrodes SUPERBAZ).

BENEFICIAR/BENEFICIARY: ROMANIAN RAILWAY NATIONAL COMPANY

IMPLEMENTING AUTHORITY: MINISTERUL TRANSPORTURILOR

CONTRACTING AUTHORITY: AUTORITATEA CONTRACTANTA / CONTRACTING AUTHORITY

PROIECT FINANȚAT DE: UNIUNEA EUROPEANA / PROJECT FINANCED BY EUROPEAN UNION

CONTRACT: 1303/2007

Faza / Phase: P7H-D5 / P7H-D5

POS Transport 2007-2013

PORTOFOLIUL DE PROIECTE PHARE CES 2005 / PHARE CES 2005 PROJECTS PORTFOLIO LOT 1

Asistența tehnică pentru pregătirea unor lucrări de reabilitare pentru tuneluri și poduri de cale ferată
Technical assistance for preparing rehabilitation works required by railway tunnels and bridges

Denumirea desen / Drawing Title: Succursala RCF / Railway district IASI. Lina de Railway line Tecuci-Iasi

Data / Date: 05.2009

Cod desen / Drawing Code: PT 37

Nr. / No: P11